



Aquatech Scientific Instruments LLC

Edgewood Village Executive Plaza
 680 Heacock Rd, Suite 204A, Yardley, PA 19067
 Phone: 215-783-5509 Fax: 267-790-0404
 Web: www.aquatechscientific.com
 email: sales.aquatechscientific.com

DBX2 HIGH PRECISION NIST TESTED DIGITAL BAROGRAPH SPECIFICATIONS DESKTOP - WALL MOUNT - FLUSH MOUNT MODELS

NIST tested

All units are NIST tested and come complete with NIST test report.

Accuracy

Barograph Accuracy ± 0.25 mb/hPa. and ± 0.007 inHg. NIST testing range is from 26.00 – 31.00 inHg, 880 – 1050mb/hPa and 660 – 787mmHg.

Sensor

Bosch high precision sensor with onboard temperature. Sensor range: 150 – 1150 mb/hPa., 4.43 – 33.96 inHg. Settable application range 406 – 1134 mb/hPa., 12.00 – 33.50 inHg. The actual intended application range is from 26.00 – 31.00 inHg, 880 – 1050mb/hPa and 660 – 787mmHg.

Resolution

Barograph Display Resolution 0.001 inHg. and 0.01 mb/hPa.

Supported Pressure Formats

MB, inHg, mmHg, PSI, h20, atm, pas.

Graphing

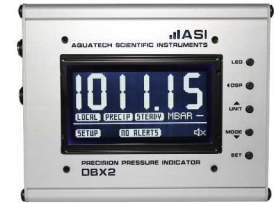
One Day and One Week graphs, each showing high and low pressure for the period

Alert and Warnings

Audible Barograph alert at 85db with on/off control. Automatic audible alert on large drop detect with warning messages. User settable drop threshold alert.

Case

Precision CNC milled air craft grade aluminum.



DBX2 DESKTOP SILVER



DBX2 DESKTOP BLACK



DBX2 WALL MOUNT SILVER



DBX2 WALL MOUNT BLACK

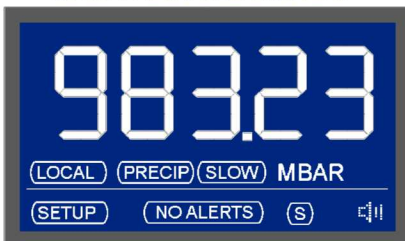


DBX2 FLUSH MOUNT SILVER

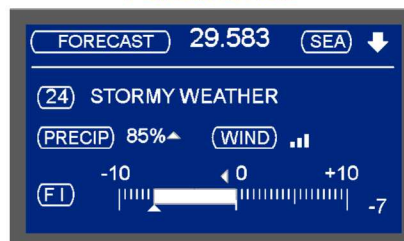


DBX2 FLUSH MOUNT BLACK

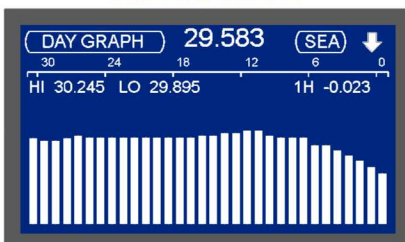
MAIN PRESSURE DISPLAY



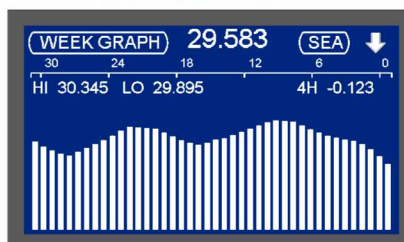
FORECASTING



ONE DAY GRAPH



ONE WEEK GRAPH



SEE WEBSITE FOR FULL PRODUCT DETAILS AND SPECIFICATIONS